

CERE



2013



Research Directors Welcome

2013 was a particularly active year with a new PhD, Dr. Amin Karimu and the promotion of Dr. Ann-Kristin Bergquist, to Associate Professor.

Lars Hassel, The President of the Umeå School of Business (USB), took over as Chairman of the CERE Board. There were two conferences that should be mentioned: the Ulvön Conference on Environmental Economics celebrated its 20th anniversary, along with the EAERE conference. In the latter, CERE member Erik Brockwell, was awarded “Best Poster Award” for his presentation “The Signaling Effect of Environmental and Health-Based Taxation Policy: An Empirical Analysis”.

Dr. Örjan Furtenback and Dr. Santosh Joshi joined CERE in an effort to construct a CGE-model together with CERE-associate and guest professor Chris Boehringer, from the University of Oldenburg. They will work together with Martin Hill, Ministry of Finance, who was promoted to Adjunct Professor at SLU. In this group we also welcome Dr. Thomas Broberg, who returns from the Ministry of Finance to work at CERE, although mostly with issues related to consumer demand. We also welcomed a new PhD-student, Oben Bayrak from Istanbul.

Our commitment to a lively intellectual environment remains as strong as ever and the very active seminar series serves as a proof of this concept, as does the Ammarnäs meeting, which we held for the 4th time. But we do not only need an inflow, we also need an active outflow (true to their commitments, the Director and the Vice-Director was teaching in November/December in Las Palmas as part of our co-operation with TIDES). A useful measure of this kind of activity is how easy it is for the Director to keep track of where the CERE members are in any given moment of time. I can testify that this is not an easy task, given the large number of co-operative ventures that now exists.

There are things on the To-Do list. Last time I tried to count, we had 11 different languages in our group and the homepage promises to have material in all these languages. This is still work in progress. And, finally, we plan to expand (in terms of new hirings) also in 2014. This is made possible inter alia because of a generous (spring 2014) grant from Umeå University, that earlier also granted us resources via a strong research environment call.

Bengt Kriström

Table of Contents

Research Directors Welcome	2
Table of Contents	3
About CERE	4
Meetings	6
Selection of Ongoing Projects	8
A CERE Working Paper	9
Personnel and Visitors	10
Publications and Activities 2012-2013	11
Professors	11
Associate Professors	19
Assistant Professors	21
Graduate Students	27
Communcation Officer	29
Associates of CERE	29

About CERE

Umeå Campus has for decades been one of the national and international nodes for research and education in environmental and natural resource economics, mainly revolving around two academic departments that have worked in close cooperation with each other; the Department of Forest Economics at the Swedish University of Agricultural Sciences (SLU), and the Department of Economics (today Umeå School of Business and Economics, USBE), at Umeå University (UmU). After many years of deliberation, it was finally decided in 2009, to further strengthen this collaboration by joining these two separate, but interlinked, research groups in resource and environmental economics by creating a research centre.

The main objectives of CERE are to:

Link research groups from different departments and the two universities

Provide seminars and workshops within the field of environmental and resource economics and management

Establish a platform for a creative and strong research environment within the field

Develop higher education in environmental and resource economics

The creation of CERE, the Centre for Environmental and Resource Economics, was achieved by pooling researchers from the two above mentioned departments, along with economic historians who have focused their research on the historical aspects of resource usage and environmental impacts, from the Department of Geography and Economic History,

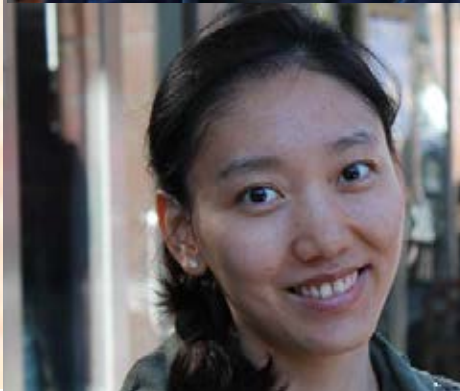
UmU. Together, the researchers at CERE embrace research areas as diverse as non-market valuation, climate policy, forest economics, environmental and energy efficiency analysis, and historical analysis of sustainable development, to mention a few examples of recent research.

Physically located in the Social Sciences Building at UmU, CERE is headed by its two founders, research director Professor Bengt Kriström, who is also head of the Department of Forest Economics, SLU Umeå, and deputy research director Professor Runar Brännlund, USBE, Umeå University. The scientific secretary is Professor Tommy Lundgren, employed both at Department of Forest Economics, SLU Umeå, and USBE, Umeå University. At the end of 2013 CERE consisted of; 5 professors, 3 guest professors, 3 associate professors, 11 assistant professors or post-docs, 15 graduate students, and one communication officer – in total 38 persons. About 35 % of the CERE personnel are employed by SLU, the remainder by UmU.

Important external funding sources for CERE have been Elforsk - Swedish Electrical Utilities' R&D Company, the Swedish Environmental Protection Agency, the Swedish Energy Agency, Formas - The Swedish Research Council for Environment, Agricultural Sciences and Spatial Planning, and Mistra – The Swedish Foundation for Strategic Environmental Research. Recruitment of post-doc's, and CERE's guest researcher program, has been generously funded by Handelsbanken Research Foundations.



photos: Juan Inda



Meetings

CERE organises two meetings each year in accordance with the CERE main objectives. That is, to link research groups, provide seminars and workshops within the field, constitute a platform for a creative and strong research environment, and develop higher education.

The Ulvön Conference

An open international conference on Environmental Economics always held adjacent to the Swedish midsummer celebration in June. The key purpose of the yearly conference is to allow PhD students to present their work and to create a forum for research in environmental economics. The conference is always held at Ulvön, a small, old fishing hamlet located at the Swedish east-coast, about 40 km south of Örnköldsvik. The island has about 40 around the year residents, but is a popular travel destination for tourists during the summer.

Approximately 30 people participated in the 20th Ulvön conference in 2013, and 20 of them presented their research. Keynote speaker this year was Professor Torsten Persson, Institute for International Economic Studies, Stockholm University. Professor Persson gave a very inspiring talk related to the effects of climate change, "Weather and Infant Mortality in Africa". Among other things Persson showed in his talk how this kind of research can be used to identify areas at risk for large health impacts in the wake of future climate change. But he also concluded that more research is needed. CERE's grateful for his participation and contribution to the conference. We are also grateful to Ann-Sophie Crépin at the Beijer Institute of Ecological Economics, and Jesper Stage at the Mid Sweden University for arranging

special sessions about the Economic Aspects of Social Ecological Systems, and the Economics of Hydropower.

Another conference tradition that was upheld also this year, was the tasting of the Swedish delicacy of fermented herring, which was well appreciated by some whilst others are not likely to try it again.

The Ammarnäs Winter Workshop

For the fourth consecutive year, CERE held its internal winter workshop in the alpine scenery of the small village of Ammarnäs, situated in the Swedish mountains. The 2013 meeting had some focus on future research and therefore we were particularly happy to have dr Martin Gustavsson from Naturvårdsverket (Swedish EPA) as guest. He gave an interested talk about future research needs, as well pointing out the need for further collaborations between research groups and the EPA.

As usual, the meeting was held at Vindelfjällens Research Station. Apart from being located at a nice spot, the research station provides an opportunity for researchers from various disciplines to gather and thereby create a creative and inspiring meeting place. The aim is to build a knowledge centre for people interested in the relationship among environmentally related issues and developments in society.

The weather was perfect for outdoor activities such as snowmobile riding, downhill and cross-country skiing. Not the least the latter is a favourite of the CERE staff that are somewhat unused to winter sport activities.



photo: Mona Bonta Bergman



photo: Juan Inda

Selection of Ongoing Projects

Energy Use and Energy Efficiency in Swedish Industry (Energimyndigheten, 2013-2014)

Central to sustainable growth is the EU “Triple 20 by 2020” target, which targets the climate, renewable energy, and energy use. In Sweden the energy target is to reduce the energy to GDP ratio by 20 percent between 2008 and 2020. Reports indicate that the target will probably not be reached without further action. It is important to seek answers on how energy and climate policies affect energy use. The project aims at empirically analyse energy use in Swedish industry and the driving forces behind energy efficiency. Sweden has the ambition to show the way to a sustainable society and needs to invest in economics research to better understand the impacts of energy and climate policies. Internationally speaking the project has access to unique data, and has a direct link to practical politics; the results will definitely serve as a contribution to the discussion of sustainability and energy targets beyond 2020, a discussion already ongoing in the EU and Sweden.

Planning and Managing the Energy Efficiency Gap: the Use of Non-price Interventions to Increase Energy Efficiency

(Energimyndigheten 2013-2014)

There has for a long time been a debate in the energy and economics literature about the potential to cost-effectively reduce energy demand. There are a vast number of analyses suggesting that the potential is substantial. As an example, the EU has an energy efficiency target to reduce energy demand by 20 percent till 2020. In recent years incomplete information and behavioral anomalies have received more attention in energy economics. If firms and households do not have appropriate

information the market solution will most likely not be at the social optimum. Inefficiencies may also arise if households cannot use information effectively due to cognitive limitations or if they under some circumstances act seemingly irrational. In the process of designing the optimal mix of policy instruments it is important to assess the extent of individual market failures and how they effectively can be addressed. In the project we contribute to this work by reviewing the literature and designing the field experiments concerning informational failures and behavioral anomalies in the context of household energy demand.

Electricity Markets and Consumer Flexibility

(Energimarknadsinspektionen 2013-2014)

An increasing share of intermittent energy sources and market based capacity reserve necessitate increased consumer flexibility. At the household level, the realistic scenario is that the electricity consumption will be directed to certain hours to relax the energy system in peak hours. The process of designing optimal policies and incentives is a challenging task and it is crucial to understand the general public's preferences considering new monitoring technology, real-time pricing and demand side management.

In this project, we analyze how people respond to possible scenarios concerning the electricity market. Specifically, we use a choice experiment approach to measure preferences for regulating the heating system and/or the use of consumer electronics, dishwashers, washer machines, etc. during certain hours of the day. In addition, we ask questions related to energy market attitudes, awareness and household characteristics.

A CERÉ Working Paper

How Large is the Owner-Renter Divide? Evidence from an OECD Cross-section

The objective of this paper is to empirically evaluate the importance of “agency effects” in household electricity consumption. More specifically, an investigation is carried out to evaluate if, when the home owner makes many technology choices (e.g. appliances and insulation), occupants who own the home they live in invest more in energy efficiency than occupants who are renters. This is an important issue in the overall context of understanding the puzzlingly slow adoption rate of energy efficient technology by households. This is an important issue from a policy perspective, too, since if the effect is significant, it represents a potentially cost-effective way of reducing energy consumption via policy actions.

In this study, we focus on the scenario wherein the owner makes an appliance or technology choice for the tenant who bears the energy costs. The owner’s decision leaves the tenant with potentially higher electricity costs, an inefficient outcome for society. Two plausible reasons for this inefficiency are: first, tenants do not have reliable information regarding energy efficiency and second, owners are unable to charge a premium for energy efficiency. Empirically, this can be observed in the data in the form of fewer energy efficient devices/technologies to which the tenant has access, relative to the owner.

Two unique aspects regarding this study are worth mentioning. The first is wide geographic coverage (data are drawn from a 2011 survey of households in 11 OECD countries), which ensures that effects observed in the study are not

restricted to narrow geographies or circumstances. Second, it addresses virtually all energy consuming technologies; both appliances (refrigerator, freezer, washing machine, dryer and oven) and heating/cooling (insulation and household-level energy generating technologies such as solar panels) are covered.

Using this dataset, we find substantial differences between owners and renters in access to energy efficient technology, varying by technology type, after controlling for differences in observed characteristics (e.g. income). These differences range from a high of 45% for appliances to a low of 2.5% for solar panels. These effects provide strong evidence for the presence of inefficiencies in the (hypothetical) market for “energy efficiency”, since in the absence of such inefficiency, owners and renters are expected to be indistinguishable in terms of access to energy efficiency.

This inefficiency implies increased usage of electricity, and associated greenhouse gas emissions. These results point to increased scope for energy policy to enhance penetration of energy efficient technology and call for more research on quantifying the impact (on energy consumption and emissions) and formulating appropriate policies.

Chandra Kiran Krishnamurthy and Bengt Kriström

Personnel and Visitors

Professors

Runar Brännlund
Peichen Gong
Bengt Kriström
Magnus Lindmark
Tommy Lundgren
Karl-Gustaf Löfgren

Associate Professors

Lars Fredrik Andersson
Ann-Kristin Bergquist
Göran Bostedt

Assistant Professors

Kelly de Bruin
Örjan Furtenback
Jurate Jaraite
Andrius Kazukauskas
Chandra Kiran B Krishnamurthy
Andrea Mannberg
Per-Olov Marklund
Fredrik Olsson Spjut
Lars Persson
Andrew L Zaeske

Graduate Students

Oben Kurtulus Bayrak
Elin Biström
Erik Brockwell
Catia Cialani
Mathilda Eriksson
Erik Geijer
Juan Salvador Inda Diaz
Amin Karimu
Shi Lei

Mikael Levin
Tharshini Thangavelu
Christos Verouchis
Anders Vesterberg
Mattias Vesterberg
Fengjie Yu
Shanshan Zhang
Katarina Östberg

Communication

Mona Bonta Bergman

CERE associates

Assistant Professor Scott Cole
Professor Shawna Grosskopf
Professor Per-Olov Johansson
Assistant Professor Anton Paulrud

CERE visitors

Professor Torsten Persson,
IIES Stockholm University, June 2013
Professor Rauli Svento,
University of Oulu, Finland, October 2013

Visit www.CERE.se to;

- sign up for the CERE newsletter
- read the latest news
- come in contact with staff
- see the CERE calendar
- learn more about CERE projects

Publications and Activities 2012-2013

Professors

Runar Brännlund

Journal articles

Bostedt, G. and Brännlund, R. (2012) Rationality, Fairness and the Cost of Distrust. *Journal of Socio-Economics* 41, 345-349

Brännlund, R. and Boisvert, R. (2012) The Use of Biomass to Produce Electricity. *Eurochoices* 10, 26-30

Brännlund, R., Carlén, O., Lundgren, T. and Marklund, P-O. (2012) The Costs and Benefits of Intensive Forest Management. *Journal of Benefit-Cost Analysis* 3(4), 2152-2812

Brännlund, R. and Persson L. (2012) To Tax, or not to Tax? Preferences for Climate Policy Attributes. *Climate Policy* 12(6), 704-721

Johansson, M., Sjöström, M., Karlsson, J. and Brännlund, R. (2012) Is Human Fear Affecting Public Willingness to Pay for the Management and Conservation of Large Carnivores? *Society and Natural Resources* 6, 610-620

Karimu, A. and Brännlund, R. (2013) Functional Form and Aggregate Energy Demand Elasticities: A Nonparametric Panel Approach for 17 OECD Countries. *Energy Economics* 36, 19-27

Book

Brännlund, R. and Kriström, B. (2012) *Miljöekonomi*. Second edition, Lund: Studentlitteratur

Book chapters

Bostedt, G., Brännlund, R. and Geijer, E. (2013) Spridningseffekter och målkonflikter. In: Kriström, B. and Bonta Bergman, M. (Eds.) *Samhällsekonomiska analyser av miljöprojekt: en vägledning*, Stockholm: Swedish Environmental Protection Agency

Brännlund, R. (2013). Mer vägar och mindre järnvägar? I Investeringar in blanco. Rapport till *Expertgruppen för studier i offentlig ekonomi*, 2013:5

Reports

Bostedt, G. and Brännlund, R. (2012) *Rationality, Fairness and the Cost of Distrust*. Working Paper 2012:6, Centre for Environmental and Resource Economics, Umeå, Sweden

Brännlund, R. (2013) *The Effects on Energy Saving from Taxes on Motor Fuels: The Swedish case*. Working Paper 2013:6, Centre for Environmental and Resource Economics, Umeå, Sweden

Brännlund, R., Karimu, A. and Söderholm, P. (2012) *Elmarknaden och elprisets utveckling före och efter avregleringen: Ekonometriska analyser*. Working Paper 2012:14, Centre for Environmental and Resource Economics, Umeå, Sweden

Geijer, E., Andersson, J., Bostedt, G., Brännlund, R. and Hjältén, J. (2012) *Is Stump Harvesting a Remedy for the Climate Crisis or a Curse for Biodiversity? An Interdisciplinary Study of Conflicting Goals*. Working Paper 2012:5, Centre for Environmental and Resource Economics, Umeå, Sweden

Conferences

3rd Ammarnäs Meeting on Environmental Economics, Organizer, 2012

4th Ammarnäs Meeting on Environmental Economics, Organizer, 2013

19th Ulvön Conference on Environmental Economics, Organizer, 2012

20th Ulvön Conference on Environmental Economics, Organizer, 2013

Invited speaker at Bil Swedens Climate seminar. Almedalen, July 2012

Invited speaker at Bil Swedens Climate seminar. Almedalen, July 2013

Invited speaker at *Biodrivmedel, nu och i framtiden*. Arranged by the Royal Swedish Academy of Sciences, June 2012

Invited speaker at Elforsk annual seminar, *Framtida energiutmaningar för Sverige*, 2013

Invited speaker at *Energy Supply – Environmental Effects, Risks and Costs*. Arranged by the Royal Swedish Academy of Sciences, May 2012

Invited speaker at the seminar about residential policy, arranged by the Ministry of Health and Social Affairs, Almedalen, July 2013

Invited speaker at *Virkesforum 2012*, The Forest Industries Annual conference

External activities

Board member of the Swedish Research Council FORMAS Scientific Council, 2010-

Board member of Trafikverket (Swedish Transport Administration), 2010-

Chairman for "Konjunkturinstitutets Vetenskapliga Råd i Miljöekonomi" (The scientific council in environmental economics), 2012-

Co-editor: *The Encyclopedia of Environmental and Resource Economics*, Elsevier. 2010-

Editor in chief: *Journal of Forest Economics*, Elsevier. 2011-

Elected member of the Royal Swedish Academy of Engineering, 2009-

Elected member of the The Royal Skyttean Society (Kungliga Skytteanska Samfundet), 2011-

Expert to the OECD project on Cost of Inaction and Resource Scarcity: Consequences for Long-term Economic Growth (CIRCLE), 2013-

Expert to the Swedish National Audit Office (Riksrevisionen) 2012, 2013

Member of the Swedish Energy Agency Strategic development platform (UP-industri), 2013-

Reviewer for the Norwegian Research Council, 2013

Research stays' abroad

Invited lecturer, TIDES, ULPGC, Spain, November 2013

Guest researcher, TIDES, ULPGC, Spain, November 2013

Peichen Gong

Journal articles

Gong, P., Löfgren, K.G. and Rosvall, O. (2013) Economic Evaluation of Biotechnological Progress: The Effect of Changing Management Behavior. *Natural Resource Modeling* 26(1), 26-52

Jiang, X., Gong, P., Bostedt, G., and Xu J. (Published online July 31st 2013) Impacts of Policy Measures on the Development of State-owned Forests in Northeast China: Theoretical Results and Empirical Evidence. *Environment and Development Economics*

Book chapters

Löfgren, K.G. and Gong, P. (2013) Economic Modeling in Forestry: Avoiding the Lucas Critique. In: Kant S. (Ed.). *Post-Faustmann Forest Resource Economics*, 241-258, Springer

Löfgren, K.G. and Gong, P. (2013) Forest Taxation, In: Shogren, J. (Ed.) *Encyclopedia of Energy, Natural Resource and Environmental Economics*, 176-182, London: Elsevier

Conferences

Gong, P. Impacts of Policy Measures on the Development of State-Owned Forests in Northeast China: Theoretical Results and Empirical Evidence. Presented at the *EAERE 19th Annual Conference*, Prague, Czech Republic, 27-30 June, 2012

Gong, P. Managing Forests to Mitigate Global Warming: Design of a Subsidy Scheme. Presented at the *International Workshop on Forest Economics*, October 2012, Beijing, China

External activity

Editor in chief: *Journal of Forest Economics*, Elsevier. 2010-

Research stays' abroad

Beijing Forestry University and Southern China Agricultural University, May 2012

South China Agricultural University, May 2013

Bengt Kriström

Journal article

Johansson, P-O and Kriström, B. (2012) Omreglering så att (nästan) alla blir vinnare. Exemplet vattenkraft. *Ekonomisk Debatt* 8, 49-60

Books

Brännlund, R. and Kriström, B. (2012) *Miljöekonomi*. Second Edition, Lund: Studentlitteratur

Johansson, P.-O. and Kriström, B. (2013) *Evaluating Water Projects: Cost-Benefit Analysis Versus Win-Win Approach*. Berlin: Springer Verlag

Johansson, P-O. and Kriström, B. (2012) *The Economics of Evaluating Water Projects: Hydroelectricity vs. other uses*. Heidelberg: Springer Verlag

Kriström, B. and Bonta-Bergman, M (Eds.) (2013) *Samhällsekonomiska analyser av miljöprojekt - en vägledning*. Stockholm: Swedish Environmental Protection Agency

Book chapters

Belyaev, Y. and Kriström, B. (2013) Analysis of Contingent Valuation Data with Self-selected Rounded WTP-Intervals Collected by two-steps sampling plans. In Köllu, (Ed.) *Multivariate Statistics: Theory and Applications*. IWorldScientific

Heal, G. and Kriström, B. (2013) Environmental policy and distribution. In Dietz, S., Neumayer E. and Atkinson, G. (Eds) *Handbook of Sustainable Development*, 2ed. Amsterdam: North-Holland

Kriström, B. and Krishnamurthy, C. K. (2013) Greening Household Behavior: Analysis of and Policy Implications of the 2011 Survey: Energy. In *Greening Household Behavior: Main Results from the 2011 Survey and Policy Implications. Thematic Reports: Energy, Transport, Water, Food and Waste*. Paris: OECD

Kriström, B. (2012) Residential Energy Demand. In Shogren, J. (Ed.) *Encyclopedia of Energy, Natural Resource, and Environmental Economics*, London: Elsevier

Kriström, B. Särskilt yttrande, Fossilfrihet på väg, *SOU 2013:84*, Stockholm: Näringsdepartementet

Reports

Belyaev, Y. and Kriström, B. (2012) *Two-step Approach to Self-selected Interval Data in Elicitation Surveys*. Working Paper 2012:10, Centre for Environmental and Resource Economics, Umeå, Sweden

Johansson, P-O. and Kriström, B. (2012) *On a New Approach to Social Evaluations of Environmental Projects*. Working Paper 2012:4, Centre for Environmental and Resource Economics, Umeå, Sweden

Krishnamurthy, C. K. and Kriström, B. (2013) *Determinants of the Price-premium for Green Energy: Evidence from an OECD Cross Section*. Working Paper 2013:7, Centre for Environmental and Resource Economics, Umeå, Sweden

Krishnamurthy, C. K. and Kriström, B. (2013) *Energy Demand and Income Elasticity: A Cross-country Analysis*. Working Paper 2013:5, Centre for Environmental and Resource Economics, Umeå, Sweden

Krishnamurthy, C. K. and Kriström, B. (2013) *How large is the Owner-renter Divide? Evidence from an OECD Cross-section*. Working Paper 2013:8, Centre for Environmental and Resource Economics, Umeå, Sweden

Modéer, C. Fagerström, T., Kriström, B. and Borgegård, Y. (2013) *Granskning av stiftelsen för internationella institutet för industriell miljöekonomi i Lund* (siiiee). Granskningsrapport, The Royal Swedish Academy of Sciences and The Royal Swedish Academy of Engineering Science, Stockholm

Conferences

3rd *Ammarnäs Meeting on Environmental Economics*, Organizer, 2012

4th *Ammarnäs Meeting on Environmental Economics*, Organizer, 2013

19th *Ulvön Conference on Environmental Economics*, Organizer, 2012

20th *Ulvön Conference on Environmental Economics*, Organizer, 2013

Chair, Speaker, The new context for forest investments and their environmental benefits, *OEF Microeconomics Workshop*. Nancy, 23 September, 2013

Invited speaker at *Residential energy demand*. Invited, IIES, Stockholm University, 23 Maj 2012

Invited speaker at *Samhällsekonomiska beslutsunderlag*. ÅSUB dagen, Mariehamn, 23 November, 2012

Invited speaker, *The Centre for Environmental Research (CMF) Yearly meeting*. April 18, 2012

Invited speaker, Project on Household Behaviour and Environmental Policy, *Fifth Meeting of the Advisory Committee*. OECD, Paris, April 2, 2012.

Invited speaker, Residential demand for green energy, *ENTWINED Workshop on Biofuels Policies*. Hafjell, Norway, 18-19 March, 2012

Keynote speaker, *Workshop on Non-market Valuation*. Nantes, 24-25th June, 2013

Speaker, Från trade-offs till win-win: Ekologisk kompensation på energiområdet. *Enveco konferens*, May 23, 2013

Speaker, Hushållens energiefterfrågan. *Energimyndigheten*, Eskilstuna, 15 Oktober, 2013

External activities

Board member, ENTWINED Research Program, 2007-2013

Board member, Faculty Recruiting and Hiring Search Committee, SLU, 2013-2016

Board Member, Scientific Advisory Board, Transport Analysis, Stockholm

Elected Working Member, The Royal Skyttean Society, 2013-

Elected Member, Swedish Society for Energy Economists 2013-

Head, Department of Forest Economics 2001-2009, 2010-

Chair, Expertgroup on Environmental Studies, Ministry of Finance 2007-2012

Consultant, OECD, EPIC-survey 2010-2012

Director, CERE 2009-

Director, PlusMinus Research Program (on hold 2011)

Elected Boardmember, Delegation for Financial Matters, Swedish Radiation Authority 2011-

Elected Member of The Royal Swedish Academy of Agriculture and Forestry, 2011 -

Expert, Commission on Fossilfree vehicles, 2012-

Expert, Scientific Council of Trafikanalys, 2011-

Member, ENV-SOC Panel, Research Council for Biosciences and Environment, 2012

Member, Evaluation Panel of the IIEEE, The Royal Swedish Academy of Sciences 2012-2013

Introduction. Sören Wibe Prize, SLU, December 4, 2012

Invited lecture, Institute of Economic Studies, Environment Center, Charles University in Prague, Prague, April 3, 2012

Invited lecture, Yearly meeting of the Norwegian Economic Association, January 3, 2012

Research stays' abroad

Invited Lecturer, TIDES, ULPGC, December 2013

University of Arizona, August 2013

Arizona State University, August 2013

Magnus Lindmark

Journal articles

Adams, M., Andersson, L-F., Lindmark, M. and Veprauskaite, E. (2012) Competing Models of Organizational Form: Risk Management Strategies and Underwriting Profitability in the Swedish Fire Insurance Market Between 1903 and 1939. *Journal of Economic History* 72 (4), 990-1014

Andersson, L F., Lindmark, M., Adams, M and Upreti, V. (2013) The Determinants of Investment Returns in the Fire Insurance Industry: The case of Sweden 1903-1939, *Financial History Review* 20(1), 73-89

Bergquist, A-K., Söderholm, K., Kinneryd, H., Lindmark, M. and Söderholm, P. (2013) Command-and-Control Revisited: Environmental Compliance and Technological Change in Swedish Industry 1970-1990. *Ecological Economics* 85, 6-19

Lindmark, M. and Acar, S. (2013) Sustainability in the Making? A Historical Estimate of Swedish Sustainable and Unsustainable Development 1850-2000. *Ecological Economics* 86, 176-187

Book chapter

Lindmark, M. (2013) Strypa tillväxten bästa lösningen? In: Kander, A and Jiborn, M (Ed.) *Generationsmålet: kontroverser kring klimat och konsumtion*. 78-91, Dialogos förlag

Reports

Bergquist, A-K., Söderholm, K., Kinneryd, H., Lindmark, M. and Söderholm, P. (2012) *Command-and-Control Revisited. Environmental Compliance and Technical Change in Swedish Industry 1970-1990*. Working Paper 2012:2, Centre for Environmental and Resource Economics, Umeå, Sweden

Lindmark, M., Svanlund, J. and Olsson-Spjut, F. (2013) *Strukturförändringar under finanskrisen – en kartläggning*, Tillväxtanalys, Working Paper 2013:7

External activity

Member of the Research Council beredningsgrupp HS-B

Member of book committee for Gjensidiges Historie, BI, Oslo

Two consulting activities for Tillväxtanalys

Research visit

Lund, April 2013

Tommy Lundgren

Journal articles

Brännlund, R., Carlén, O., Lundgren, T. and Marklund, P-O. (2012) The Costs and Benefits of Intensive Forest Management. *Journal of Benefit-Cost Analysis* 3(4), 2152-2812

Lundgren, T., and Marklund, P-O. (2013) Assessing the Welfare Effects of Promoting Biomass Growth and the use of Bioenergy. *Climate Change Economics* 4(1), 1-13

Lundgren, T. and Marklund, P-O. (2012) Bioenergy and Carbon Neutrality. *Journal of Forest Economics* 18(3), 175-176

Book

Lundgren, T., Stage, J., Tangerås, T. and Carlén, B. (2013). *Energimarknaden, ägandet och klimatet* (The energy market, ownership, and the climate). Stockholm: SNS Förlag

Book chapters

Lundgren, T. (2012). Sustainable development in Swedish industry? In: Hassel, L., Larsson, L-O. and E. Nore. (Eds.) *Hållbar utveckling - Från risk till värde* (Sustainable development – from risk to value), 59-65 Stockholm: Studentlitteratur

Lundgren, T. and Marklund, P-O. (2013) Economics of Biofuel: An overview. In: Shogren, J. (Ed.) *Encyclopedia of Energy, Natural Resource and Environmental Economics* 1, 184-187, London: Elsevier

Reports

Färe, R., Grosskopf, S., Lundgren, T., Marklund, P-O. and Zhou, W. (2012) *Pollution Generating Technologies and Environmental Efficiency*. Working Paper 2012:16, Centre for Environmental and Resource Economics, Umeå, Sweden

Färe, R., Grosskopf, S., Lundgren, T., Marklund, P-O. and Zhou, W. (2012) *Productivity: Should we Include Bads?* Working Paper 2012:13, Centre for Environmental and Resource Economics, Umeå, Sweden

Färe, R., Grosskopf, S., Lundgren, T., Marklund, P-O., Zhou, W. (2013) *Which Bad is Worst? An Application of Leif Johansen's Capacity Model*, Working Paper 2013:2, Centre for Environmental and Resource Economics, Umeå, Sweden

Jaraité, J., Kažukauskas, A. and Lundgren, T. (2012) *Determinants of Environmental Expenditure and Investment: Evidence from Sweden*, Working Paper 2012:7, Centre for Environmental and Resource Economics, Umeå, Sweden

Lundgren, T. and Marklund, P-O. (2012) *Environmental Performance and Profits*. Working Paper 2012:8, Centre for Environmental and Resource Economics, Umeå, Sweden

Lundgren, T., Marklund, P-O., Samakovlis, E., Zhou, W. (2013) *Carbon Prices and Incentives for Technological Development*. Working Paper 2013:4, Centre for Environmental and Resource Economics, Umeå, Sweden

Newspaper articles

Lundgren, T., Carlén, B. and Stage, J. Kommunala klimatsatsningar riskerar bli slag i luften. *Göteborgsposten*, August 28th 2013

Lundgren, T. and Marklund, P-O. Bioenergi, klimat och ekonomi, *Miljöforskning – Formas tidning för ett hållbart samhälle*, No 1, March 2012

Lundgren, T. and Marklund, P-O. Bioenergy, Climate and Economy. *Sustainability – Journal from the Swedish Research Council Formas*, No 2, April 2012

Conference

EWEPA Productivity Meeting Helsinki, June 2013

Lundgren, T. Environmental Policy and Impact on Environmental and Economic Performance. *Energiutblick* (www.energiutblick.se) Gothenburg March 2012

Lundgren, T. Climate Policy, Environmental Performance, and Profits. *MISTRA presentation at Schroeder Investment Bank*, London, May 10, 2012

Lundgren, T. Determinants of Environmental Investment and Expenditure, *EAERE Annual Conference on Environmental and Resource Economics*, Prague, June 2012

Lundgren, T. Environmental Performance and Profits. *Tsinghua University International Meeting on Productivity*, July 14-15, 2012

Lundgren, T. Environmental Performance and Profits. *APPC Meeting on Productivity*, Bangkok, July 24-27, 2012. Special invite to present at plenary session in honour of Rolf Färe's 70th birthday

The 20th Annual Conference of the European Association of Environmental and Resource Economists (EAERE), Toulouse, France, on June 26-29, 2013

External activities

Discussant at pre-dissertation seminar Hans Nylund, Luleå Technical University, June 2013 "Four essays on the Nordic electricity market".

Lundgren, T. *Climate Policy, Environmental Performance, and Profits*. Seminar at UC Berkeley, Agricultural and Resource Economics, December 7, 2012

Research stay abroad

Visiting researcher at the Department of Agricultural and Resource Economics, UC Berkeley, CA 94 720, USA, 2012/11/01-2013/01/01
Local host: Professor Peter Berck

Karl-Gustaf Löfgren

Journal articles

Aronsson, T., Cialani, C. and Löfgren, K-G. (2012) Genuine Saving and the Social Costs of Taxation. *Journal of Public Economics* 96, 211-217

Gong, P., Löfgren, K.G. and Rosvall, O. (2013) Economic Evaluation of Biotechnological Progress: The Effect of Changing Management Behavior. *Natural Resource Modeling* 26(1), 26-52

Li, C-Z. and Löfgren, K-G. (2013) Genuine Savings Measurement under Uncertainty and its Implications for Depletable Resource Management, *Environmental Economics* 4(3), 20-25

Li, C-Z. and Löfgren, K-G. (2012) Genuine Saving under Stochastic Growth. *Letters in Spatial and Resource Sciences*. 5, 167-174

Li, C-Z. and Löfgren, K-G. (2012) Growth, Pollution and Money-Metric Welfare in Imperfect Markets. *Environmental Economics* 4, 8-15

Löfgren, K-G. (2012) Elinor Ostrom och allmänningarnas problem (Elinor Ostrom and the Problem of the Commons). *Ekonomiska Samfundets Tidskrift* 2, 86-93

Löfgren, K-G. (2012) Forest Economics Before and After 1979 Seen from my Window, *Journal of Forest Economics*, 18(2), 91-93

Book chapters

Löfgren, K.G. and Gong, P. (2013) Economic Modeling in Forestry: Avoiding the Lucas Critique. In: Kant S. (Ed.). *Post-Faustmann Forest Resource Economics*. 241-258. Springer

Löfgren, K.G. and Gong, P., (2013). Forest taxation, In Ed. J. Shogren., *Encyclopedia of Energy, Natural Resource and Environmental Economics*, 176-182, London: Elsevier

Report

Li, C-Z. and Löfgren, K-G. (2012) *Genuine Savings under Uncertainty and their Implications for Depletable Resource Management*. Mimeographed Uppsala and Umeå Universities

Newspaper article

Löfgren, K-G. (2012) Ett oslagbart rekord, *Visuellt Västerbottens Idrottshistoriska Tidskrift*

Conference

20th *Ulvön conference on Environmental Economics*, Ulvön, Sweden, 2013

External activities

CESifo Munich Lectures in Economics, Lectures by Distinguished CES Fellow 2013 Ernst Fehr, November 19-21, 2013

Chairman of The Institute of Labour Market - and Human Capital Evaluations (IFAU)

Reviewer of applications at the Swedish Research Council (group: empirical statistics) 2012

Associate Professors

Lars-Fredrik Andersson

Journal article

Andersson, L.F., Lindmark, M., Adams, M and Upreti, V. (2013) The Determinants of Investment Returns in the Fire Insurance Industry: The case of Sweden 1903-1939, *Financial History Review* 20(1), 73-89

Newspaper article

Andersson, L.F. Eriksson, M., Tolofsen, Wingborg, M. Arbetsgivarna har total makt över bärplockarnas situation (September 30th 2013), *DN.Debatt*

Ann-Kristin Bergquist

Journal articles

Bergquist, A-K. and Söderholm, K. (2012) Svenska skogsindustrins samarbete i miljöfrågan: en framgångssaga? *Nordisk Pappershistorisk Tidskrift* (4), 3-6

Bergquist, A-K. and Söderholm, K., Kinneryd, H., Lindmark, M. and Söderholm, P. (2013) Command-and-Control Revisited. Environmental Compliance and Technical Change in Swedish Industry 1970-1990, *Ecological Economics* 85, 6-19

Söderholm, K. and Bergquist, A-K. (2013) Environmental Adaptation and Industrial Competitiveness: Experiences from the Swedish Pulp Industry, *Sustainability* 5, 1789-1805

Söderholm, K. and Bergquist, A-K. (2012) Firm-collaboration and Environmental Adaptation. The Case of the Swedish Pulp- and paper Industry 1900-1990, *Scandinavian Economic History Review*, 2 (60) 183-211

Reports

Bergquist, A-K., Söderholm, K., Kinneryd, H., Lindmark, M. and Söderholm, P. (2012) *Command-and-Control Revisited. Environmental Compliance and Technical Change in Swedish Industry 1970-1990*. Working Paper 2012:2, Centre for Environmental and Resource Economics, Umeå, Sweden

Söderholm, K. and Bergquist, A-K. (2013) *Greening of Business: the Case of Domsjö Pulp Mill 1960-1990*. Reserach report, ISSN: 1402-1528 , ISBN 978-91-7439-554-9, Luleå tekniska universitet

Conferences

Bergkvist, A-K. *European Business History Association Conference*. Paper: Transition to Chlorine Free Pulp: Experiences from the Swedish Pulp and Paper Industry in Contrast to the US, Uppsala, August 22-24, 2013

Bergquist, A-K. *European Business History Association Conference*, Paper: Environmental Adaptation, Technology Development and Competition, Paris, 30 August-1 September 2012

Bergquist, A-K. Svenska skogsindustrins samarbete i miljöfrågan: en framgångssaga? *Nordisk Pappershistorisk Konferens*, Östanå, Sweden, June 15th, 2012

External activity

Visiting reseracher at Harvard Business School, Boston, USA. 2012/09/01—2012/12/01

Göran Bostedt

Journal articles

Bostedt, G. and Brännlund, R. (2012) Rationality, Fairness and the Cost of Distrust. *Journal of Socio-Economics* 41, 345-349

Ekvall, H., Bostedt, G. and Jonsson, M. (2013) Least-Cost Allocation of Measures to Increase the Amount of Coarse Woody Debris in Forest Estates. *Journal of Forest Economics* 19(3), 267-285

Jiang, X., Gong, P., Bostedt, G., and Xu J. (Published online July 31st 2013) Impacts of Policy Measures on the Development of State-owned Forests in Northeast China: Theoretical Results and Empirical Evidence. *Environment and Development Economics*, doi:10.1017/S1355770X13000363

Widmark, C., Bostedt, G., Andersson, M. and Sandström, C. (2013) Measuring Transaction Costs in Multiple Land Use Situations – The Case of Forestry and Reindeer Husbandry in Sweden. *Land Use Policy* 30, 677-684

Östberg, K., Håkansson, C., Hasselström, L. and Bostedt, G. (2013) Benefit Transfer for Environmental Improvements in Coastal Areas: General vs. Specific Models. *Canadian Journal of Agricultural Economics* 61, 239-258

Book

Bostedt, G. (2013), *Naturrekurs- och skogsekonomi*. Lund: Studentlitteratur

Book chapters

Bostedt, G., Brännlund, R. and Geijer, E. (2013) Spridningseffekter och målkonflikter. In: Kriström, B. and Bonta Bergman, M. (Eds.). *Samhällsekonomiska analyser av miljöprojekt - en vägledning*. Stockholm: Swedish Environmental Protection Agency

Bostedt, G., Innala, S., Löfgren, S. and Bishop, K. (2013) Fallstudie 1 – Kalkningsstudie. In: Kriström, B. and Bonta Bergman, M. (Eds.). *Samhällsekonomiska analyser av miljöprojekt - en vägledning*. Stockholm: Swedish Environmental Protection Agency

Reports

Bostedt, G. and Brännlund, R. (2012) *Rationality, Fairness and the Cost of Distrust*. Working Paper 2012:6, Centre for Environmental and Resource Economics, Umeå, Sweden

Geijer, E., Andersson, J., Bostedt, G., Brännlund, R. and Hjältén, J. (2012) *Is Stump Harvesting a Remedy for the Climate Crisis or a Curse for Biodiversity? An Interdisciplinary Study of Conflicting Goals*. Working Paper 2012:5, Centre for Environmental and Resource Economics, Umeå, Sweden

Håkansson, C., Östberg, K. and Bostedt, G. (2012) *Estimating Distributional Effects of Environmental Policy in Swedish Coastal Environments – A Walk along different Socio-economic Dimensions*. Working Paper 2012:18, Centre for Environmental and Resource Economics, Umeå, Sweden

Conferences

Bostedt, G. Measuring Transaction Costs incurred by Pastoralist Users in Multiple Land-Use Situations, invited paper presented at the *18th International Symposium on Society and Resource Management (ISSRM)*, Edmonton, Canada, June 2012

Bostedt, G. Ash Recycling – A Method to Improve Forest Production or to Restore Acidified Surface Waters? Invited paper presented at the *IUFRO International Symposium on Socio-economic Analyses of Sustainable Forest Management*, Prague, Czech Republic, May 2013

Bostedt, G. Pastoralist Users in Multiple Land-Use Situations: Economic Behavior, Wildlife Conflicts, and Transaction Costs from Unclear Property Rights. Invited presentation at the *ICRAF-SLU workshop*, Nairobi, Kenya, November 2013

External activities

Guest lecturer, December 14th to 21st, 2012, Graduate/masters Course in Resource Economics, Beijing Forestry University, Beijing, China

Grading Committee Member, Anna Mansikkasalo's Ph.D. thesis, Economics Unit, Luleå University of Technology, May 8, 2013.

Invited speaker at *Forum för samhällsekonomisk analys*, arranged by the Swedish Environmental Protection Agency, November 2012

Assistant Professors

Kelly de Bruin

Report

UNEP; AMCEN; Climate Analytics, (2013) *Africa's Adaptation Gap - Climate-change Impacts, Adaptation Challenges and Costs for Africa*, UNEP Technical Report

Conferences

de Bruin, K. C. Adaptation and Mitigation Challenges of the SSPs, *16th Annual Conference on Global Economic Analysis*, June 12-14 2013, Shanghai, China

de Bruin, K. C. Workshop on Climate Adaptation, *International Energy Workshop 2012*, Cape Town, South Africa

de Bruin, K. C. *Improving the connection between empirical research and integrated assessment models NBER*, May 17-18, 2012 Boston, USA

Jūratė Jaraitė

Journal articles

Jaraitė, J. and Di Maria, C. (2012) Efficiency, Productivity and Environmental Policy: a Case Study of Power Generation in the EU. *Energy Economics* 34, 1557-1568

Jaraitė, J. and Kažukauskas, K. (2012) The Effect of Mandatory Agro-environmental Policy on Farm Fertiliser and Pesticide Expenditure. *Journal of Agricultural Economics* 63, 656-676

Jaraitė, J. and Kažukauskas, K. (2013) The Profitability of Electricity Generating Firms and Policies Promoting Renewable Energy, *Energy Economics* 40, 858-865

Reports

Jaraitė, J., Jong, T., Kažukauskas, A., Zaklan, A., and Zeitlberger, A. (2013) *Matching EU ETS Accounts to Historical Parent Companies: A Technical Note*. European University Institute, Florence. Available online at <http://fsr.eui.eu/CPRU/EUTLTransactionData.aspx>

Jaraitė, J. and Kažukauskas, A. (2012) *Firm Trading Behaviour and Transaction Costs in the European Union's Emissions Trading System: An Empirical Assessment*. Working Paper 2012:9, Centre for Environmental and Resource Economics, Umeå

Jaraitė, J., Kažukauskas, A. and Lundgren, T. (2012) *Determinants of Environmental Expenditure and Investment: Evidence from Sweden*. Working Paper 2012:7, Centre for Environmental and Resource Economics, Umeå.

Conferences

Jaraitė, J. Firm Trading Behaviour and Transaction Costs in the European Union's Emissions Trading System: an Empirical Assessment In: *The 32nd International Energy Workshop*, Paris (FR), June 2013

Invited speaker at the *18th POWER Conference on Energy Research and Policy*, University of California, Berkeley (USA). Firm Trading Behaviour and Transaction Costs in the European Union's Emissions Trading System: an Empirical Assessment, March 2013

Invited speaker at *The Annual EUI Climate Policy Conference, Florence (IT)*. Firm Trading Behaviour and Transaction Costs in the European Union's Emissions Trading System: an Empirical Assessment, October 2012

External activity

Jaraitė, J., Jong, T., Kažukauskas, A., Zaklan, A., and Zeitlberger, A. (2013) Ownership Links and Enhanced EUTL Dataset. European University Institute, Florence. Available online at <http://fsr.eui.eu/CPRU/EUTLTransactionData.aspx>

Research stays' abroad

European University Institute, Florence, Italy, May 2013

University of Gothenburg, August 20-24, 2012

Andrius Kazukauskas

Journal articles

Jaraitė, J. and Kažukauskas, A. (2012) The Effect of Mandatory Agro-environmental Policy on Farm Fertiliser and Pesticide Expenditure. *Journal of Agricultural Economics* 63, 656-676

Jaraitė, J. and Kažukauskas, K. (2013) The Profitability of Electricity Generating Firms and Policies Promoting Renewable Energy. *Energy Economics* 40, 858-865

Kažukauskas, A., Newman, C., Sauer, J. and Clancy, D. (2013) Disinvestment, Farm Size and Gradual Farm Exit: the Impact of Subsidy Decoupling in a European Context. *American Journal of Agricultural Economics* 95(5), 1068-1087

Kažukauskas, A. Newman, C. and Sauer, J. (Published online August 23rd 2013) CAP Reform and its Impact on Structural Change and Productivity Growth: A Cross Country Analysis. *Agricultural Economics*, DOI: 10.1111/agec.12068

Reports

Jaraitė, J. and Kažukauskas, A. (2012) *Firm Trading Behaviour and Transaction Costs in the European Union's Emissions Trading System: an Empirical Assessment*. Working Paper 2012:9, Centre for Environmental and Resource Economics, Umeå, Sweden

Jaraitė, J., Kažukauskas, A. and Lundgren, T. (2012) *Determinants of Environmental Expenditure and Investment: Evidence from Sweden*. Working Paper 2012:7, Centre for Environmental and Resource Economics, Umeå, Sweden

Jaraitė, J., Jong, T., Kažukauskas, A., Zaklan, A., and Zeitlberger, A. (2013) *Matching EU ETS Accounts to Historical Parent Companies: A Technical Note*. European University Institute, Florence. Available online at <http://fsr.eui.eu/CPRU/EUTLTransactionData.aspx>

Conferences

The Profitability of Power Generating Firms and Policies Promoting Renewable Energy, *9th International Conference of Young Scientists on Energy Issues (CYSENI)*, Kaunas, May 2012

Firm Trading Behaviour and Transaction Costs in the European Union's Emissions Trading System: an Empirical Assessment. *The Annual EUI Climate Policy Conference, Florence (IT)*, October 2012

The Profitability of Power Generating Firms and Policies Promoting Renewable Energy. *The European Energy Market 9th Conference (EEM)*, Florence, May 2012

Speaker at *The 20th Annual Conference of the European Association of Environmental and Resource Economists (EAERE)*, Toulouse, France, on June 26-29, 2013

Firm Trading Behaviour and Transaction Costs in the European Union's Emissions Trading System: an Empirical Assessment. *The 20th Annual Conference of the European Association of Environmental and Resource Economists (EAERE)*, Toulouse, France, on June 26-29, 2013

External activity

Jaraitė, J., Jong, T., Kažukauskas, A., Zaklan, A., and Zeitlberger, A. (2013) Ownership Links and Enhanced EUTL Dataset. European University Institute, Florence. Available online at <http://fsr.eui.eu/CPRU/EUTLTransactionData.aspx>

Research stay abroad

Visiting Researcher at European University Institute (EUI), Robert Schuman Centre for Advanced Studies, Climate Policy Research Unit for 4 weeks, 2013

Chandra Kiran B Krishnamurthy

Book chapter

Kriström, B. and Krishnamurthy, C. K. (2013) Greening Household Behavior: Analysis of and Policy Implications of the 2011 Survey: Energy. In *Greening Household Behavior: Main Results from the 2011 Survey and Policy Implications. Thematic Reports: Energy, Transport, Water, Food and Waste*. Paris: OECD

Reports

Krishnamurthy, C. K. (2012) *Optimal Management of Groundwater under Uncertainty: A Unified Approach*. Working Paper 2012:12, Centre for Environmental and Resource Economics, Umeå, Sweden

Krishnamurthy, C. K. (2012) *Structural Properties of Stochastic Groundwater Models*. Working Paper 2012:19, Centre for Environmental and Resource Economics, Umeå, Sweden

Krishnamurthy, C. K. and Kriström, B. (2013) *Energy Demand and Income Elasticity: a Cross Country Analysis*. Working Paper 2013:5, Centre for Environmental and Resource Economics, Umeå, Sweden

Krishnamurthy, C. K. and Kriström, B. (2013) *Determinants of the Price-premium for Green Energy: Evidence from an OECD Cross-section*. Working Paper 2013:7, Centre for Environmental and Resource Economics, Umeå, Sweden

Krishnamurthy, C. K. and Kriström, B. (2013) *How Large is the Owner-Renter Divide? Evidence from an OECD Cross-section*. Working Paper 2013:8, Centre for Environmental and Resource Economics, Umeå, Sweden

Krishnamurthy, Chandra Kiran (2013) *Distributional impacts of Energy Policies: An Analysis of the 2011 EPIC data*. Working Paper, OECD (Environment Directorate), Paris, France

Conferences

Determinants of Residential Demand for Green Energy, *ASSA meetings*, San Diego, January 2013

Structural Properties of Stochastic Groundwater Models. *The 20th Annual Conference of the European Association of Environmental and Resource Economists (EAERE)*, Toulouse, France, on June 26-29, 2013

Structural Properties of Stochastic Groundwater Models, *EURO-INFORMS*, Rome, July 2013

Determinants of Residential Demand for Green Energy, *IAEE European Energy Conference*, Venice, Italy, September 9-12, 2012

Distributional impacts of Climate Change on Indian Agriculture, *AAEA Agricultural and Applied Economics Association 2012*, Seattle, USA, August 12-14, 2012

Distributional impacts of Climate Change on Indian Agriculture, *EAERE 19th Annual Conference*, Prague, Czech Republic, June 27-29 2012

Invited speaker at *Workshop on Biofuels policies*, Residential Demand for Green Energy, Hajfell Resort, Lillehammer, Norway, March 18-20, 2012

The Distributional Impacts of Climate Change on Indian Agriculture: A Quantile Regression Approach, *Jan 2011, Sloan School of Management, MIT; June 2011; National Institute for Advanced Studies and The Ashoka Trust for Ecology and Environment, Bangalore, India; Jan 2012, Madras school of Economics, Madras, India*

Research stays' abroad

OECD, Environmental Directorate, August 2013

Visiting Researcher, Purdue University, Dept. of Agricultural Economics, January 2013

Visiting Researcher, Madras School of Economics, Madras, India, December 2011-January 2012

Andrea Mannberg

Journal articles

Mannberg, A. (2012) Risk and Rationalization - The Role of Affect and Cognitive Dissonance for Sexual Risk Taking. *European Economic Review* 56(6), 1325–1337

Mannberg, A. (2012) Risky Sex in a Risky World – Sexual Behaviour in a HIV/AIDS Environment. *Scandinavian Journal of Economics* 114(2), 296-322

Conference

CSAE – *Conference on Sub-Saharan African Economies*, Oxford- presentation of: "The Role of Land Certification in Reducing Gender Gaps in Productivity in Rural Ethiopia" co-authored with Mintewab Bezabih and Stein Holden, 2012

External activities

Uma Lele Best Paper on Gender Issues: "The Role of Land Certification in Reducing Gender Gaps in Productivity in Rural Ethiopia", co-authored with Mintewab Bezabih and Stein Holden, 2012

University of Wyoming, presentation of the paper "Do tax Incentives Affect Households' Adoption of 'Green' Cars? A Panel Study of the Stockholm Congestion Tax", joint work with Runar Brännlund, Johan Jansson, Thomas Pettersson and Urban Lindgren

Per-Olov Marklund

Journal articles

Broberg, T., Marklund, P-O., Samakovlis, E., and Hammar, H. (2013) Testing the Porter Hypothesis – The Effects of Environmental Investments on Efficiency in Swedish Industry. *Journal of Productivity Analysis* 40(1), 43-56

Brännlund, R., Carlén, O., Lundgren T. and Marklund, P-O. (2012) The Cost and Benefits of Intensive Forest management. *Journal of Benefit-Cost Analysis* 3(4), 2152-2812

Lundberg, S. and Marklund, P-O. (2013) Green Public Procurement as an Environmental Policy Instrument: Cost Effectiveness. *Environmental Economics* 4(4), 50-58

Lundgren, T. and Marklund, P-O. (2013) Assessing the Welfare Effects of Promoting Biomass Growth and the Use of Bioenergy. *Climate Change Economics* 4(1), 1-13

Lundgren, T. and Marklund, P-O. (2012) Bioenergy and Carbon Neutrality. *Journal of Forest Economics* 18(3), 175-176

Book chapter

Lundgren, T., Marklund, P-O. (2013) Economics of Biofuels: An Overview. In: Shogren, J.F., (Ed.) *Encyclopedia of Energy, Natural Resource, and Environmental Economics* 1, 184-187, London: Elsevier

Reports

Färe, R., Grosskopf, S., Lundgren, T., Marklund, P-O. and Zhou, W. (2012) *Polluting Generating Technologies and Environmental Efficiency*. Working Paper 2012:16, Centre for Environmental and Resource Economics, Umeå, Sweden

Färe, R., Grosskopf, S., Lundgren, T., Marklund, P-O. and Zhou, W. (2012) *Productivity: Should we Include Bads?* Working Paper 2012:13, Centre for Environmental and Resource Economics, Umeå, Sweden

Färe, R., Grosskopf, S., Lundgren, T., Marklund, P-O. and Zhou, W. (2013) *Which Bad is Worst? An Application of Leif Johansen's Capacity Model*. Working Paper 2013:2, Centre for Environmental and Resource Economics, Umeå, Sweden

Lundberg, S. and Marklund, P-O. (2012) *Green Public Procurement as an Environmental Policy Instrument: Cost Effectiveness*. Umeå Economic Studies No. 847, Department of Economics, Umeå School of Business and Economics, Umeå University, Sweden

Lundberg, S. and Marklund, P-O. (2013) *Offentlig upphandling eller gröna nedköp? En ESO-rapport om miljöpolitiska ambitioner*. Rapport till Expertgruppen för studier i offentlig ekonomi 2013:10

Lundgren, T., Marklund, P-O., Samakovlis, E. and Zhou, W. (2013) *Carbon Prices and Incentives for Technological Development*. Working Paper 2013:4, Centre for Environmental and Resource Economics, Umeå, Sweden

Lundgren, T. and Marklund, P-O. (2012) *Environmental Performance and Profits*. Working Paper 2012:8, Centre for Environmental and Resource Economics, Umeå, Sweden

Newspaper articles

Lundberg, S. and Marklund, P-O. Grön offentlig upphandling har ingen effekt på miljön (DN Debatt December 10th 2013). *Dagens Nyheter*

Lundgren, T. and Marklund, P-O. Bioenergi, klimat och ekonomi, *Miljöforskning – Formas tidning för ett hållbart samhälle*, No 1, March 2012

Lundgren, T. and Marklund, P-O. Bioenergy, Climate and Economy. *Sustainability – Journal from the Swedish Research Council Formas*, No 2, April 2012

Samakovlis, E., Lundberg, S. and Marklund, P-O. Grön upphandling på felaktiga grunder, (Published online May 16th 2013), *Göteborgs-Posten*

Fredrik Olsson Spjut

Report

Lindmark, M., Svanlund, J. and Olsson-Spjut, F. (2013) *Strukturförändringar under finanskrisen – en kartläggning*, Tillväxtanalys, Working Paper 2013:7

Lars Persson

Journal articles

Aronsson, T. and Persson, L. (2012) Decentralized Fiscal Federalism Revisited: Optimal Income Taxation and Public Goods under Horizontal Leadership. *Economics letters* 117(1), 223-226

Aronsson, T., Persson, L. and Sjögren, T. (published online May 13th 2013) Mixed Taxation, Public Goods, and Transboundary Externalities: A Model with Large Jurisdictions. *Public Finance Review*

Brännlund, R. and Persson, L. (2012) To Tax, or not to Tax? Preferences for Climate Policy Attributes. *Climate policy* 12(6), 704-721

Ek, K., Persson, L., Johansson, M. and Waldo, Å. (2013) Location of Swedish Wind Power – Random or not? *Energy Policy* 58, 135-141

Persson, L. (2012) Environmental Policy and Lobbying in Small Open Economies. *Resource and Energy Economics* 43(1), 24-35

Reports

Ek, K. and Persson, L. *Wind farms – Where and How to Put Them?* Umeå economic studies Nr.854

Ek, K., Johansson, M., Persson, L. and Waldo, Å. (2012) *Kommunerna och vindkraften*. Environmental psychology monographs No. 22. Architecture and built environmental faculty of engineering, Lund University ISSN 0280-8269

Waldo, Å., Ek, K., Johansson, M. and Persson, L. (2013) *Vindkraft i öppet landskap, skog, fjäll och hav*. Naturvårdsverket, rapport 6540, ISBN: 978-91-620-6540-9

Conferences

4th *Ammarnäs meeting on Environmental economics*, Ammarnäs, Sweden, 2013

20th *Ulvön conference on Environmental Economics*, Ulvön, Sweden, 2013

Environmental policy, decentralized leadership and horizontal commitment power. PET 12, *The Association for Public Economic Theory 13th Annual Conference*. Taipei, Taiwan, 2012

Invited speaker at CWE2013, *Conference on Wind Power and Environmental Impacts* (Plenary session). Stockholm, Sweden, 2013

Invited speaker at *Nationella vindkraftskonferensen 2013* (National Wind Energy Conference). Kalmar, Sweden, 2013

Speaker at *the 20th Annual Conference of the European Association of Environmental and Resource Economists (EAERE)*, Toulouse, France, on June 26-29, 2013

Wind Farms - Where and how to put them? *The Ulvön Conference on Environmental Economics*, Ulvön, Sweden, 2012

Andrew Zaeske

Report

Zaeske, A. (2012) *Aggregate Technical Efficiency and Water Use in U.S. Agriculture*. Working Paper 2012:11, Centre for Environmental and Resource Economics, Umeå, Sweden

Conferences

Zaeske, A. An Investigation of Spatial Externalities in Water Use. *The 19th Ulvön Conference*, Ulvön, Sweden, June 19-21, 2012

Zaeske, A. Measuring Efficiency in Wholesale Energy Production. *The 12th IAEE European Energy Conference*, Venice, Italy, September 9-12, 2012

Zaeske, A. (2012) Water Use and Agricultural Production: A County Level Analysis of the Continental United States. *U.S. EPA Technical Workshop: Importance of Water*, Washington, D.C., September 19, 2012.

Zaeske, A. and Kiran B Krishnamurthy, C. An Analytical Assessment of the Relationship Between Social Welfare and Legal Restrictions in a Water Network : An Economic Analysis of Institutional Failures in Water. *The 20th Ulvön Conference*, Ulvön, Sweden, June 18-20, 2013.

Graduate Students

Catia Cialani

Journal article

Aronsson, T., Cialani, C. and Löfgren, K.-G. (2012) Genuine Saving and the Social Cost of Taxation. *Journal of Public Economics* 96, 211–217

External activity

Referee for the Journal Ecological Modelling, Elsevier Science

Mathilda Eriksson

Report

Eriksson, M. (2013) The Role of the Forest in an Integrated Assessment Model of the Climate and the Economy. Working Paper 2013:1, Centre for Environmental and Resource Economics, Umeå, Sweden

Conferences

Eriksson, M. The Role of the Forest in an Integrated Assessment Model of the Climate and the Economy. *International Energy Workshop*. Paris, June 19- 21, 2013

The Role of the Forest in an Integrated Assessment Model of the Climate and the Economy. *The 20th Annual Conference of the European Association of Environmental and Resource Economists (EAERE)*, Toulouse, France, on June 26-29, 2013

Research stay abroad

Visiting Scholar at the Department of Agricultural and Resource Economics, University of California, Berkeley, Fall 2013

Erik Geijer

Book chapter

Bostedt, G., Brännlund, R. and Geijer, E. (2013) Spridningseffekter och målkonflikter. In: Kriström, B. and Bonta Bergman, M. (Eds.). *Samhällsekonomiska analyser av miljöprojekt - en vägledning*. Stockholm: Swedish Environmental Protection Agency

Report

Geijer, E., Andersson, J., Bostedt, G., Brännlund, R. and Hjältén, J. (2012) *Is Stump Harvesting a Remedy for the Climate Crisis or a Curse for Biodiversity? An Interdisciplinary Study of Conflicting Goals*. Working Paper 2012:5, Centre for Environmental and Resource Economics, Umeå, Sweden

Juan Salvador Inda Diaz

Conferences

Inda, J. Valuing a Power Plant Facility with Restricted Production Capacity Using Optimal Switching. 20th *Ulvön Conference on Environmental Economics*, June 18-20, Ulvön, Sweden, 2013

Inda, J. Valuing a Power Plant Facility with Restricted Production Capacity Using Optimal Switching. *XXVI Euro-Infirms 26th European Conference on Operational Research "Sapienza"*, University of Rome, Rome July 1-4, 2013

Inda, J. Valuing a Power Plant Facility with Restricted Production Capacity Using Optimal Switching, *IWCee13 - International Workshop on Computational Economics and Econometrics*, Rome July 12-13, 2013

Inda, J. Valuing a Power Plant Facility with Restricted Production Capacity Using Optimal Switching. Ammanäs Winter Workshop, March 25-27, 2013

Amin Karimu

Journal article

Karimu, A. and Brännlund, R. (2013) Functional Form and Aggregate Energy Demand Elasticities: A Nonparametric Panel Approach for 17 OECD Countries, *Energy Economics* 36, 19-27

Book

Karimu, A (2013) *Essays on energy demand and household energy choice*. PhD thesis, Umeå University. Advisor: Professor Runar Brännlund

Reports

Brännlund, R., Karimu, A. and Söderholm, P. (2012) *Elmarknaden och elprisets utveckling före och efter avregleringen: Ekonometriska analyser*. Working Paper 2012:14, Centre for Environmental and Resource Economics, Umeå, Sweden

Karimu, A and J.T., Mensah, (2013) Climate Change and Electricity Consumption in Sub-Saharan Africa: Any Causal Dynamics? In: *Africa Climate Conference (ACC2013)*, October 15-18, 2013

Katarina Östberg

Journal articles

Östberg, K., Hasselström, L. and Håkansson, C. (2012) Non-market Valuation of the Coastal Environment - Uniting Political Aims, Ecological and Economic Knowledge. *Journal of Environmental Management* 110, 166-178

Östberg, K., Håkansson, C., Hasselström, L. and Bostedt, G. (2013) Benefit Transfer for Environmental Improvements in Coastal Areas: General Versus Best-Fitting Models. *Canadian Journal of Agricultural Economics* 61(3), 239-258

Report

Håkansson, C., Östberg, K. and Bostedt, G. (2012) *Estimating Distributional Effects of Environmental Policy in Swedish Coastal Environments – A Walk along Different Socio-economic Dimensions*. Working Paper 2012:18, Centre for Environmental and Resource Economics, Umeå, Sweden

Communcation Officer

Mona Bonta Bergman

Book

Kriström, B. and Bonta-Bergman, M (Eds.) (2013) *Samhällsekonomiska analyser av miljöprojekt - en vägledning*. Stockholm: Swedish Environmental Protection Agency

Associates of CERE

Assistant Professor Scott Cole

Journal articles

Cole, S.G. and Lie Dahl, E. (2013) Compensating White-tailed Eagle Mortality at the Smøla Wind-power Plant Using Electrocutation Prevention Measures. *Wildlife Society Bulletin* 37 (1), 84-93

Cole, S. G. 2013. Equity Over Efficiency: a Problem of Credibility in Scaling Resource-based Compensation. *Journal of Environmental Economics & Policy* 2(1), 93-117

Book

Cole, S. (2012) *Environmental Compensation is not for the Birds: Assessing Social Welfare Impacts of Resource-based Environmental Compensation*. Ph.D Thesis, Department of Forest Economics, SLU Umeå. May. ISBN 978-91-576-7665-8. Advisor: Professor Bengt Kriström

Book chapters

Cole, S. (2013) Del IV, Kapitel 3 Resursekvivalens. In: Kriström, B. and Bonta Bergman, M. (Eds.). *Samhällsekonomiska analyser av miljöprojekt - en vägledning (Guidance document for socioeconomic analysis of environmental projects)*. Stockholm: Swedish Environmental Protection Agency

Cole, Scott. (2013) Del II, Kapitel 4. Fallstudie Vindkraft. In: Kriström, B. and Bonta Bergman, M. (Eds.). *Samhällsekonomiska analyser av miljöprojekt - en vägledning (Guidance document for socioeconomic analysis of environmental projects)*. Stockholm: Swedish Environmental Protection Agency

Reports

Cole, S.G., Hasselström, L., Aponte, A. P. and Stavlöt, U. (2013) *Evaluating Alternative Payment for Ecosystem Services (PES) Schemes for Coastal Wetlands and Mangrove Ecosystems in Mui Ca Mau National Park (MCMNP)*. Vietnam Environment Ministry. 5 December 2013

Cole, S. (2013) *Shared Values Background Paper*. The Baltic Sea – Our Common Treasure. Economics of Saving the Sea.

Cole, S. and Hasselström, L. (2013) *Oil Spill Management Background Paper*. The Baltic Sea – Our Common Treasure. Economics of Saving the Sea

Soutukorva, Å., Johansson, K., Hasselström, L., Cole, S. and Remvig, H. (2013) *Samhällsekonomisk analys av myggproblemets kostnader (Socioeconomic analysis of the costs of nuisance mosquitos)*. Länsstyrelsen Gävleborg

Cole, S. and Hasselström, L. (2012) *Valuing Marine Ecosystem Services Affected by Oil Spills in the Baltic Sea and the Northeast Atlantic*. Stockholm: Swedish Environmental Protection Agency and Göteborg: Swedish Agency for Marine and Water Management

Enveco Environmental Economics Consultancy, EnviroEconomics Sweden, and IVL Swedish Environmental Research Institute. (2012) *An Ecosystem Service Approach for Analyzing Marine Human Activities in Sweden: A Synthesis for the Economic and Social Analysis of the Initial Assessment of the Marine Strategy Framework Directive*. Göteborg: Swedish Agency for Marine and Water Management, Report 2012:8

Cole, S., Hasselström, L., Engkvist, F. and Söderqvist, T. (2012) *Using Markets to Supply Ecosystem Services – How to Make it Happen?* FORES Study 2012-3

Söderqvist, T., Hasselström, L., Soutukorva, Å., Cole, S. and Malmaeus, M. (2012) *An Ecosystem Service Approach for Analyzing Marine Human Activities in Sweden: A Synthesis for the Economic and Social Analysis of the Initial Assessment of the Marine Strategy Framework Directive*. Summary of comprehensive economic analysis for Swedish Environmental Protection Agency and Swedish Agency for Marine and Water Management.

Conferences

Cole, S. with Moksnes, P. Ecosystem Services Provided by Seagrass Beds in Sweden. *CERF Conference*, San Diego, California. 4 November, 2013

Cole, S. Evaluating Alternative Payment for Ecosystem Services (PES) Structures for Mangrove Ecosystems in Mui Ca Mau National Park (MCMNP). *Vietnam's Mechanism of Payment for Coastal Ecosystem Services Workshop*, Ca Mau, Vietnam. October, 2013

External activities

Environmental Compensation – Policy Tool for Valuing Natural Capital or a Free Ticket for Developers? (Ekologisk kompensationsmedel för värdering av naturkapital eller exploatörernas fribiljett?) Panel member discussant at seminar during Sweden's Almedalen political week, Gotland. 3 July, 2013

Valuing Marine Ecosystem Services Affected by Oil Spills in the Baltic Sea and the Northeast Atlantic. Report Presented for the Norwegian Coast Guard, Oslo, Norway. January 11, 2012

Professor Shawna Grosskopf

Journal articles

Chambers, R., Färe, R., Grosskopf, S. and Vardanyan, M. (2013) Generalized Quadratic Revenue Functions. *Journal of Econometrics* 173, 11-21

Chau, N., Färe, R. and Grosskopf, S. (2013) Trade Restrictiveness and Pollution. *Journal of Public Economic Theory* 15(1), 25-52

Cross, R. Färe, R. Grosskopf, S. and Weber, W.L. (2013) Valuing Vineyards: A Directional Distance Function Approach. *Journal of Wine Economics*, 69-82

Färe, R. and Grosskopf, S. (2013) DEA, Directional Distance Functions and Positive, Affine Data Transformation. *Omega* 41, 28-30

Färe, R., Grosskopf, S. and Margaritis, D. (2012) Pricing Decision-Making Units, *Journal of the Operational Research Society*, 1-3

Färe, R. Grosskopf, S. and Pasurka, C. (2013) Joint Production of Good and Bad Outputs with a Network Application. *Encyclopedia of Energy, Natural Resources and Environmental Economics* 2, 109-118

Färe, R., Grosskopf, S. and Pasurka, C. (2013) Tradable Permits and Unrealized Gains from Trade. *Energy Economics* 40, 416-424

Färe, R., Grosskopf, S. and Tremblay, V. (2012) Market Power and Technology. *Review of Industrial Organization* 40(2), 139-146

Färe, R., Grosskopf, S., Margaritis, D. and Weber, W.L. (2012) Technological Change and Timing Reductions in Greenhouse Gas Emissions, *Journal of Productivity Analysis* 37(3), 205-216

Färe, R., Grosskopf, S., Pasurka, C. and Martins-Filho, C. (2013) On Nonparametric Estimation: with a focus on Agriculture. *Annual Reviews* 5, 93-110

Färe, R., Fukuyama, H., Grosskopf, S. and Weber, W.L. (2013) Measuring Efficiency in Price Space with Application to Japanese Security Firms. *International Journal of Operations Research and Information Systems*, 1-26

Färe, R., Grosskopf, S., Pasurka, C. and Weber, W.L. (2012) Substitutability Among Undesirable Outputs, *Applied Economics*, 44(1), 39-47

Book chapter

Färe, R., Pasurka, C. and Shadbegian, R. (2013) Environmental and Regulatory Rigidity and Employment in the Electric Power Sector, In *Does Regulation Kill Jobs?* C. Coglianese, et al. (Eds.) 89-108. Philadelphia: University of Pennsylvania Law School

Reports

Färe, R., Grosskopf, S., Lundgren, T., Marklund, P-O. and Zhou, W. (2012) *Pollution Generating Technologies and Environmental Efficiency*. Working Paper 2012:16, Centre for Environmental and Resource Economics, Umeå, Sweden

Färe, R., Grosskopf, S., Lundgren, T., Marklund, P-O. and Zhou, W. (2012) *Productivity: Should we Include Bads?* Working Paper 2012:13, Centre for Environmental and Resource Economics, Umeå, Sweden

Färe, R., Grosskopf, S., Lundgren, T., Marklund, P-O., Zhou, W. (2013) *Which Bad is Worst? An Application of Leif Johansen's Capacity Model*. Working Paper 2013:2, Centre for Environmental and Resource Economics, Umeå, Sweden

Professor Per-Olov Johansson

Journal article

Johansson, P-O. and Kriström, B. (2012) Omreglering så att (nästan) alla blir vinnare. Exemplet vattenkraft. *Ekonomisk Debatt* 8, 49-60

Books

Johansson, P-O. and Kriström, B. (2013) *Evaluating Water Projects: Cost-Benefit Analysis Versus Win-Win Approach*. Berlin: Springer Verlag

Johansson, P-O. and Kriström, B. (2012) *The Economics of Evaluating Water Projects: Hydroelectricity vs. other uses*. Heidelberg: Springer Verlag

Report

Johansson, P-O. and Kriström, B. (2012) *On a New Approach to Social Evaluations of Environmental Projects*. Working Paper 2012:4, Centre for Environmental and Resource Economics, Umeå, Sweden

External activities

External expert on European Investment Bank's work on developing a manual for project evaluations

External expert on Csil's - Centre for Industrial Studies, Milan, Italy – Evaluation of EU Financed Infrastructure Projects

CERE
USBE
Umeå University
S-901 87 Umeå
Sweden

www.cere.se

